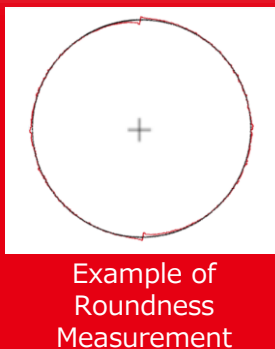
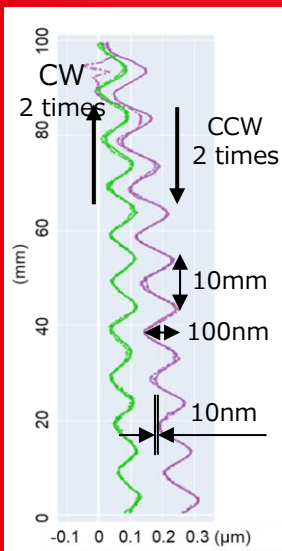


## The 2D enables to show what you couldn't see



New Standard for Accuracy Evaluation of Precision Stage

# SET-SC2020

High Resolution, High Frequency

**Resolution 10pm**

Sampling Frequency 10kHz

Enables high accuracy measurement equivalent to an interferometer, with no atmospheric effect.

**Cumulative Accuracy  $\pm 0.5\mu\text{m}$**

( Effective Scale Length 200×200mm )

Uses zero expansion glass, unaffected by ambient temperature

**Thermal Expansion Coefficient**

$0.1 \times 10^{-6}/^{\circ}\text{C}$

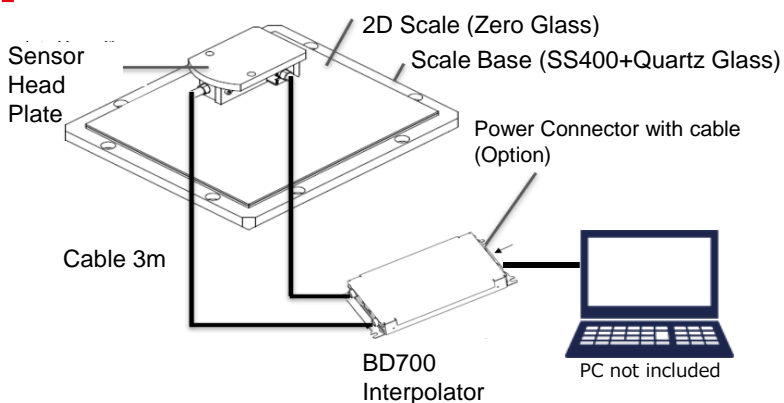
Greater working distance of sensor head enables easy installation. Also enables vertical installation.

Distance between the sensor head and the scale

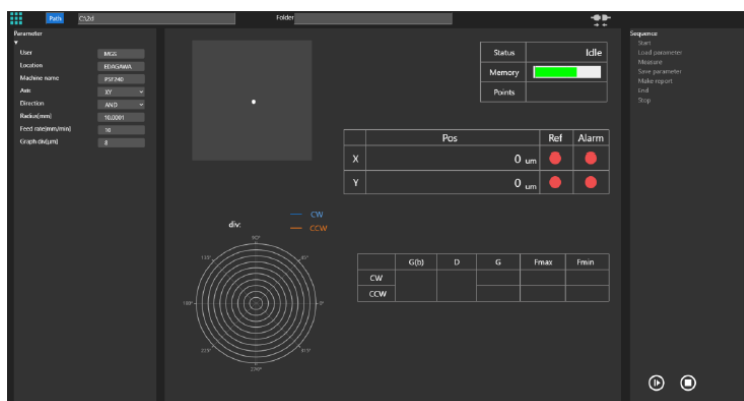
**$2.9\text{mm} \pm 0.2\text{mm}$**



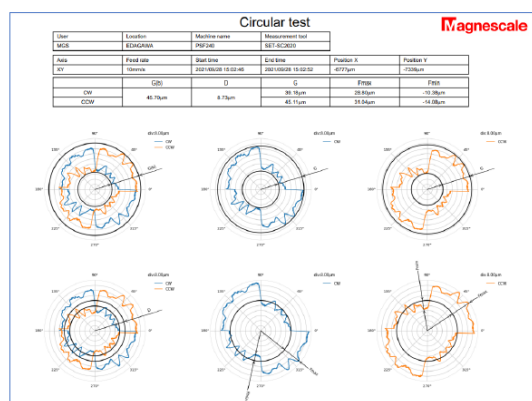
## System Configuration



## Sample of Measurement Software



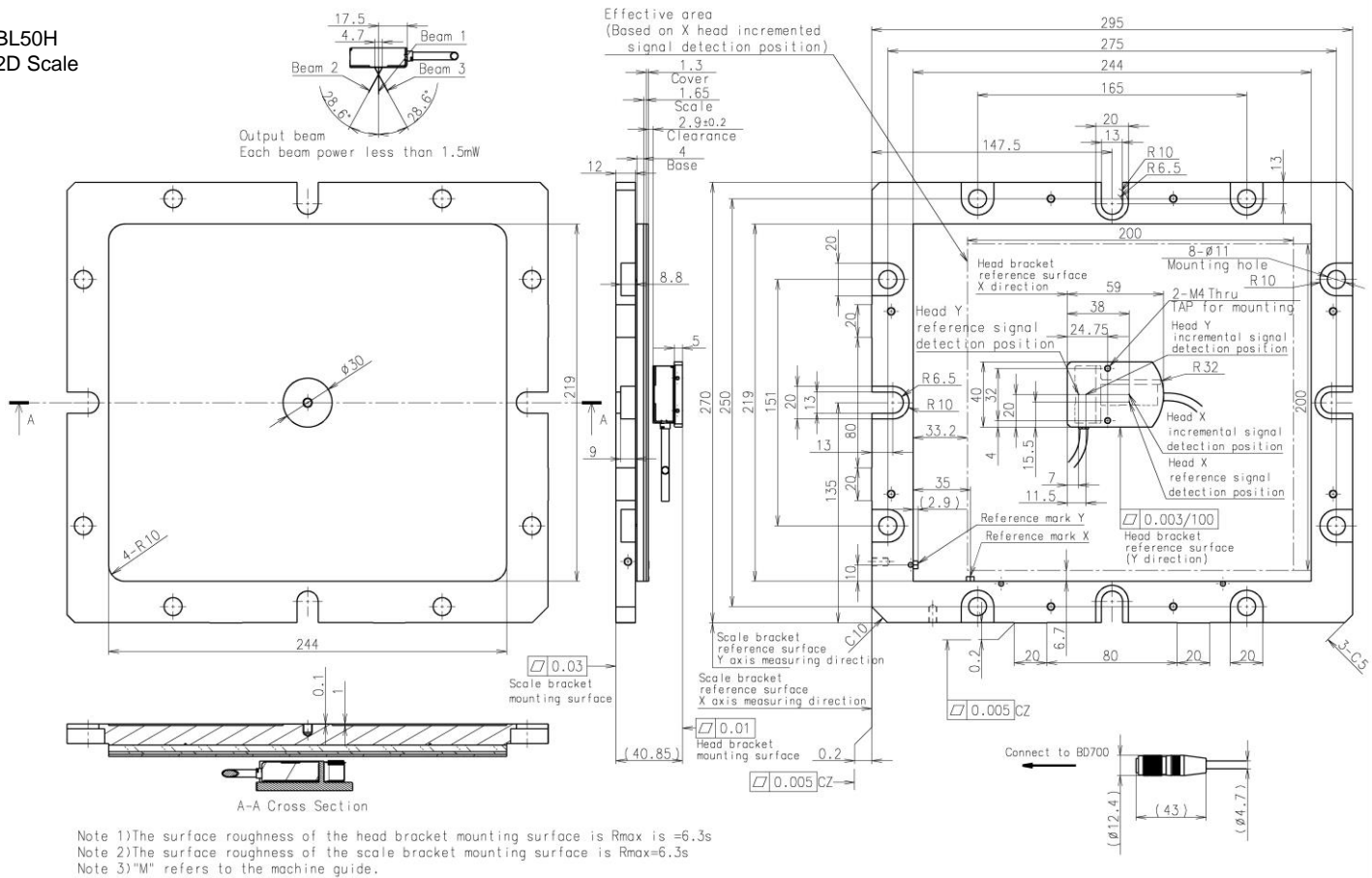
Roundness measurement mode screen



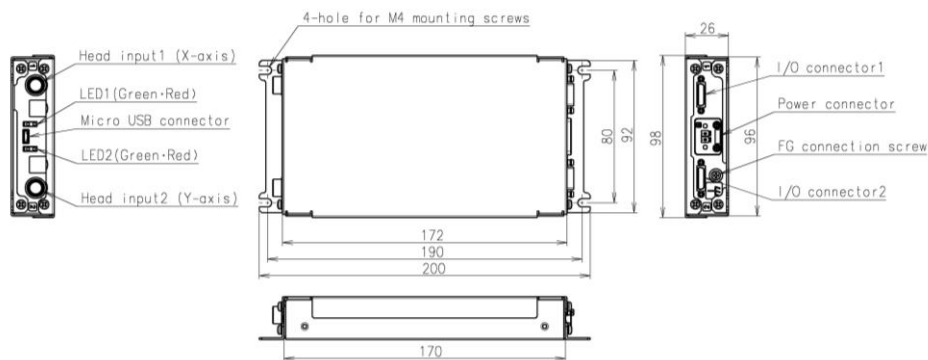
Roundness measurement report File

## Drawing of the Product Appearance

BL50H  
2D Scale



Interpolator  
BD700



Unit per  
measure : mm

## Main Specifications

Measuring Length	200 × 200 mm
Signal Cycle	400 nm
Maximum Resolution	10 pm
Cumulative Accuracy	±0.5 μm (After compensation, scale measuring length 200 × 200mm)
Working Distance	2.9±0.2 mm
XY Orthogonality	±0.3 s (After compensation)
Scale Material and the Thermal Expansion Coefficient	ZERO Glass、0.1×10 <sup>-6</sup> /℃
Scale Base Material and the Thermal Expansion Coefficient	SS400 : 11.8×10 <sup>-6</sup> /℃, Quartz Glass : 0.5×10 <sup>-6</sup> /℃
Measuring Speed	1.0 m/s
Sensor Head Mass	0.2 kg ( without cable)
Cable Length	3 m
Input and Output Signals	BiSS C for Incremental , USB
Packaging	With Carry Case
Software	Measurement Software (CSV output), Roundness measurement Software, Lissajous monitoring software

※For your safety : Please read "Instruction Manual "carefully before using the product. ●Contents may be subject to change without prior notice

※This product (and technology) falls under item 16 of the Export Ordinance Appendix 1 (Item 16 of the Foreign Exchange Ordinance Appendix).

Please check with the exporter regarding the necessity of permission from the Ministry of Economy, Trade and Industry under the catch-all control.

Magnescale Co., Ltd.

International Sales Department : 3-1-4 Edagawa, Koto-ku, Tokyo 135-0051, Japan  
 Magnescale Americas Inc. : 1 Technology Drive, Suite F217, Irvine, CA 92618, USA  
 Magnescale Europe GmbH : Antoniusstrasse 14, 73249 Wernau, Germany  
 Customer Support Department : 45 Suzukawa, Isehara-shi, Kanagawa 259-1146, Japan

TEL.+81(0)3-6632-7924  
TEL.+1(949)727-4017  
TEL.+49(0)7153-934-291  
TEL.+81(0)463-92-2132

SETSC2020-EA04S  
S.2312.FO100

The contents of this literature are as of Dec. 2023.