

Magnescale®

Accessory

AC20-B100

Thank you for purchasing this Magnescale product.
Read all the instructions in the manual carefully before use and strictly follow them.
Be sure to keep this manual for future reference.

This instruction manual corresponds to the special software Ver. 01.01.

Instruction Manual

Trademarks

Microsoft Windows is the registered trademark of Microsoft Corporation.

Intel® Core™i3 is the registered trademark of Intel Corporation.

Other system names, product and service names described in the instruction manual are trademarks or registered trademarks of their corresponding manufacturers.

Note

The text and display screens of this instruction manual, with some exceptions, assume the use of a computer running Windows7. For other operating systems, there might be cases such as restricted functionalities and or different displays.

- IN NO EVENT WILL MAGNESCALE CO LTD OR ITS SUPPLIERS BE LIABLE TO YOU FOR ANY CONSEQUENTIAL OR INCONSEQUENTIAL DAMAGES, INCLUDING ANY LOST PROFITS OR LOST SAVINGS OR ANY CLAIMS MADE BY A THIRD PARTY ARISING OUT OF USE OF THE HARDWARE SYSTEM AND ITS SOFTWARE DESCRIBED IN THIS MANUAL.
- The specification of the products and its software may be changed without prior notice.

Contents

1. Outline	1
1-1. Introduction.....	1
1-2. Major functions and features of the software	1
1-3. Product configuration	1
2. Names and functions of each part	2
3. System environment and setup	3
3-1. Compatible system environment	3
3-1-1. Compatible scales.....	3
3-1-2. System requirement	3
3-2. Software installation.....	4
3-3. Driver installation.....	8
3-4. Software uninstallation.....	10
3-5. Scale connection	11
4. Starting up the software and supplying power to the scale	12
4-1. Starting up the software.....	12
4-2. Ending the software.....	12
4-3. Supplying power to the scale.....	13
4-4. Stopping the power supply to the scale	13
4-5. Scale search	14
4-6. System settings	16
5. Monitoring Lissajous signals.....	17
5-1. Monitoring the Lissajous signal of SR27A/SR67A/SR87/SR77/RU77/RU97 ..	17
5-1-1. SR/RU series screen	17
5-1-2. Starting and stopping monitoring.....	19
5-2. Monitoring the Lissajous signals of RS97	21
5-2-1. RS series screen.....	21
5-2-2. Starting and stopping monitoring.....	23
5-3. Monitoring the Lissajous signals of SQ57/SQ47.....	25
5-3-1. SQ series screen	25
5-3-2. Starting and stopping monitoring.....	26

6. Troubleshooting	27
6-1. Trouble when connecting the power supply.....	27
6-1-1. The Connect button is not displayed.	27
6-1-2. Power is not supplied to the scale even when the Connect button is clicked.	27
6-1-3. The message “Couldn’t power on scale.” appears when power is supplied.	28
6-2. Trouble during monitoring.....	29
6-2-1. Measurement does not start even when ”Start” or ”Measure” is clicked.....	29
6-2-2. Measurement does not stop even when “Stop” or ”Measure” is clicked.	29
6-3. Trouble when stopping the power supply	30
6-3-1. Stopping the power supply fails even when the Connect button is clicked.....	30
7. Specifications	31
8. Dimensions	32

1. Outline

1-1. Introduction

The AC20-B100 is a monitoring tool used to perform scale failure analysis and to check scale operation after installing or replacing scales. This tool is used by connecting it to a computer to which the special software Ver. 01.01*¹ has been downloaded and a compatible scale.

*1: Download the special software from the Magnescale website. This product is used to check the scale failure status and installation status, and does not guarantee scale functions or performance. Refer to the respective instruction manual for the scale operation method.

1-2. Major functions and features of the software

Lissajous signal monitoring

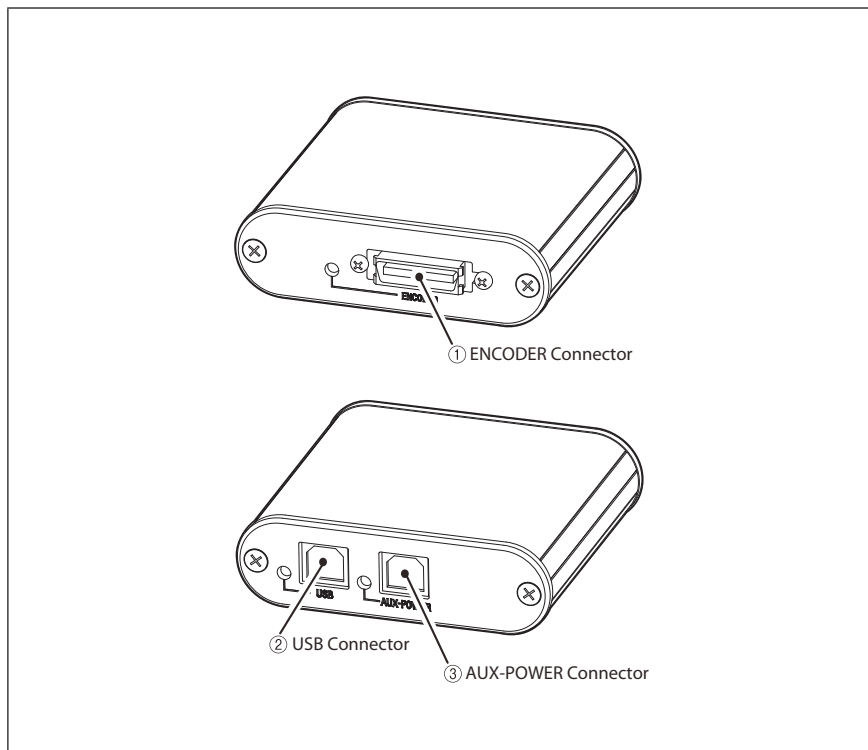
Use the monitoring function that matches the scale.

- SR/RU Lissajous monitoring function
- RS Lissajous monitoring function
- SQ Lissajous monitoring function

1-3. Product configuration

AC20-B100	
Software	MGS Monitoring System (Download from the Magnescale website.)
USB cable	× 2 (accessory)
Adaptor cable (sold separately)	CE35-02 (compatible controller: Mitsubishi Electric Corporation) CE36-02 (compatible controller: FANUC Corporation) CE37-02 (compatible controller: SIEMENS AG)
Special cable	SR77, SR87, and RU77 series require separate special cables. Contact our sales representative.

2. Names and functions of each part



Name	Description
① ENCODER Connector	Connects to the scale using the adaptor cable (sold separately)
② USB Connector	Connects to the computer using the supplied USB cable.
③ AUX-POWER Connector	Connects to the computer using the supplied USB cable to provide power when power supply to the scale is insufficient. This connector cannot be used for communication. (An external DC 5 V power supply adaptor can also be connected.)

3. System environment and setup

3-1. Compatible system environment

3-1-1. Compatible scales

The following scales are compatible.

SR27A Series

SR67A Series

SR77 Series

SR87 Series

RU77 Series

RU97 Series

RS97 Series

SQ47/SQ57 Series

SR77, SR87, and RU77 series require separate special cables. Contact our sales representative.

3-1-2. System requirement

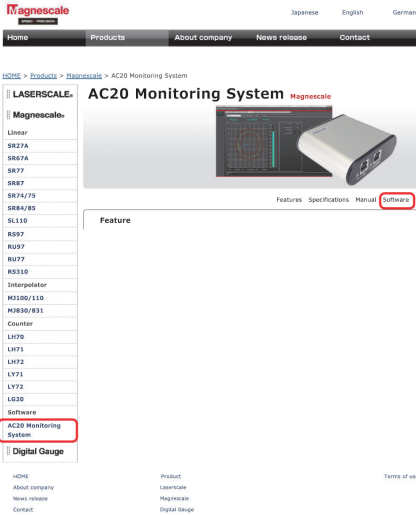
Item	Environment
CPU	Intel Core i3 or higher recommended*1
RAM	1 GB or higher recommended*1
OS	Windows 7 (32bit/64bit of each edition) Windows 10 (32bit/64bit of each edition)
Display	1080 × 800 pixels or higher*1
USB	2.0

*1 : It must satisfy the requirements of the OS.

3-2. Software installation

Note: If a different version is already installed in the computer to be connected, be sure to uninstall that version before performing software installation.
(Refer to “3-4. Software uninstallation.”)

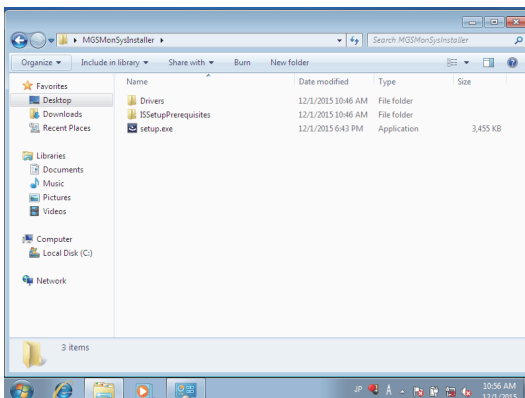
- 1 Download the MGS Monitoring System from the Magnescale website.
URL : <http://www.magnescale.com/mgs/language/english/product/>



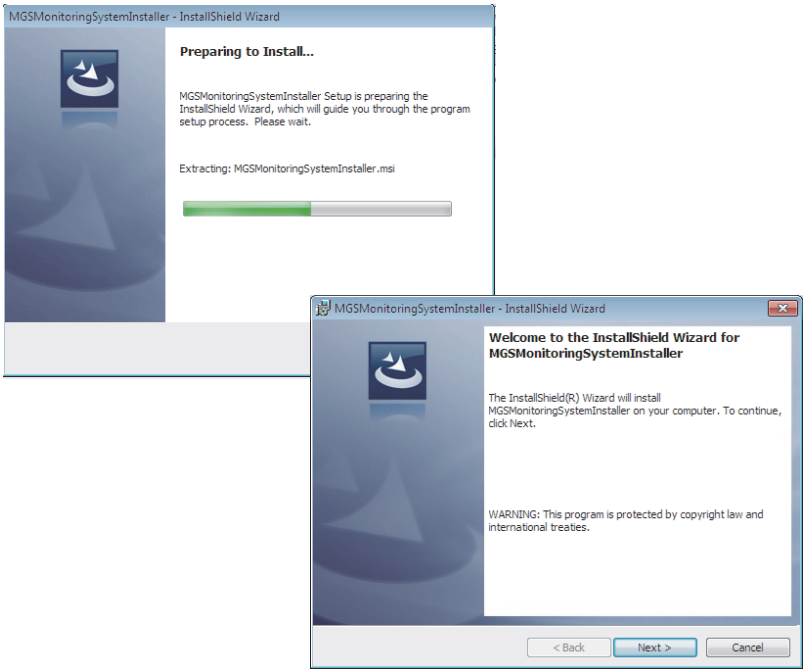
Download file :



- 2 Double-click the downloaded file.
The folders contained in the file are displayed.

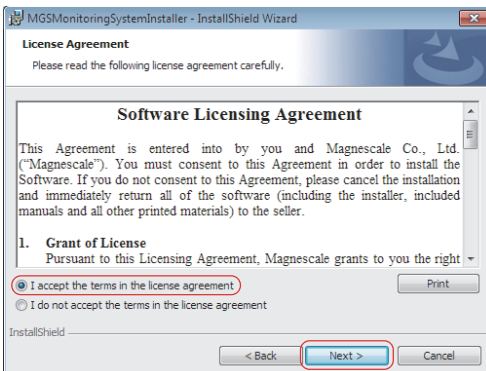


3 Double-click “setup.exe.”

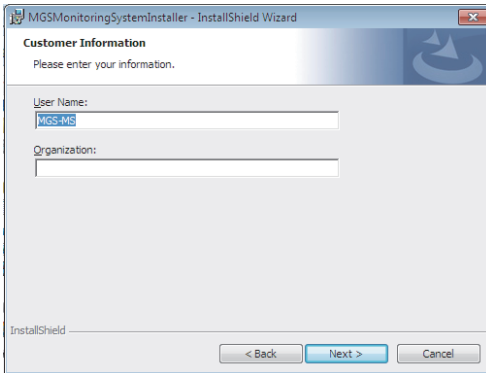


4 Click “Next>.” The Software License Agreement appears.

5 If you agree to the displayed license conditions, select “I accept the terms in the license agreement” and then click “Next>.”



The Customer Information window appears.



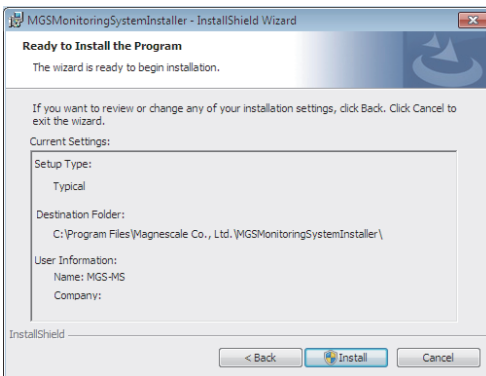
6 Enter the following items to the Customer Information window.

User Name : User name

Organization: Company name

7 Click “Next>.”

A dialog box appears notifying that installation is ready.

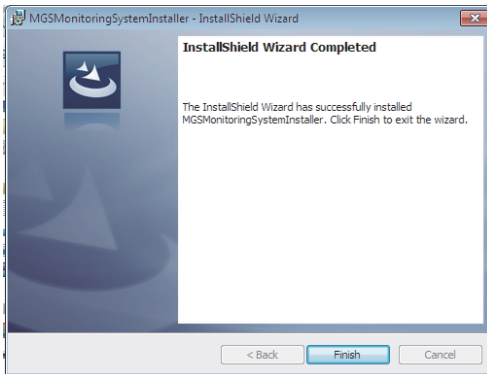


8 Click “Install.”

Installation starts.

An installation progress bar appears during installation.

- 9 When the dialog box shown below appears, click “Finish.”



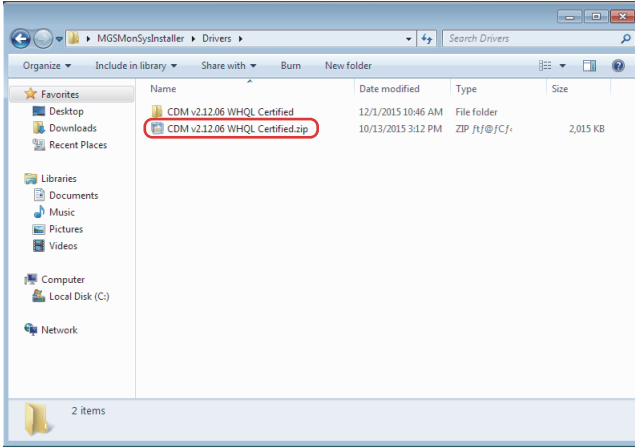
- 10 Confirm that the “MGSMonitoringSystem” icon appears on the computer desktop.



The installation is complete.

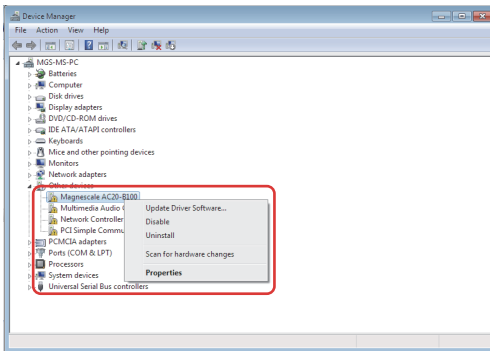
3-3. Driver installation

- 1 Connect the AC20-B100 to the computer using the supplied USB cable.
- 2 Click the “Drivers” folder within the installer installed in section 3-2.
- 3 Double-click the ”CDM v2.12.06 WHQL Certified.zip” file.



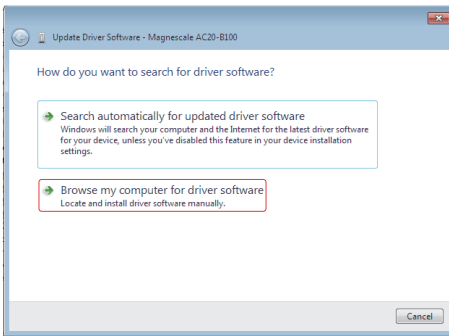
The file is extracted.

- 4 Click “Device Manager” on the Control Panel of the computer.
- 5 Right-click “Magnescale AC20-B100” and select “Update Driver Software.”

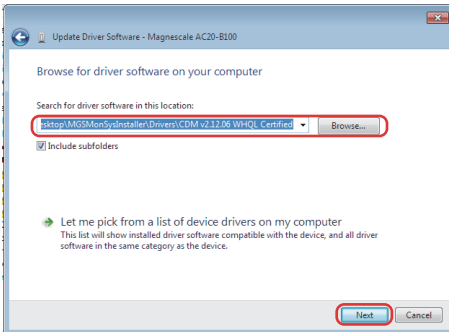


The Update Driver Software window opens.

6 Click “Browse my computer for driver software.”

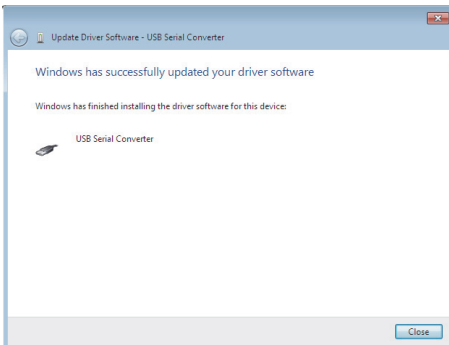


7 Designate the file extracted in step 3 in the “Search for driver software in this location” field, and click “Next”.



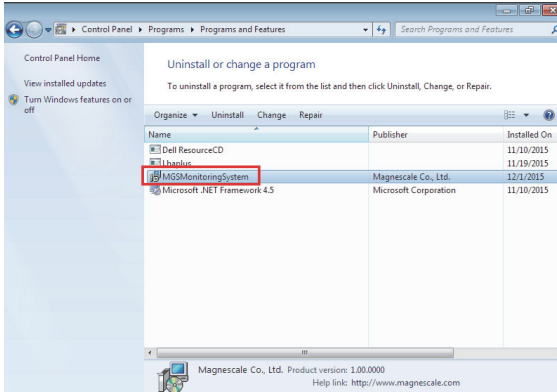
Device driver installation starts.

8 When the dialog box shown below appears, click “Close” to complete the installation.

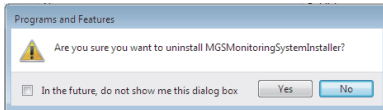


3-4. Software uninstallation

- 1 Click “Programs and Features” on the Control Panel of the computer.
- 2 Double-click “MGSMonitoringSystem” in the displayed list of software.



The dialog box shown below appears.



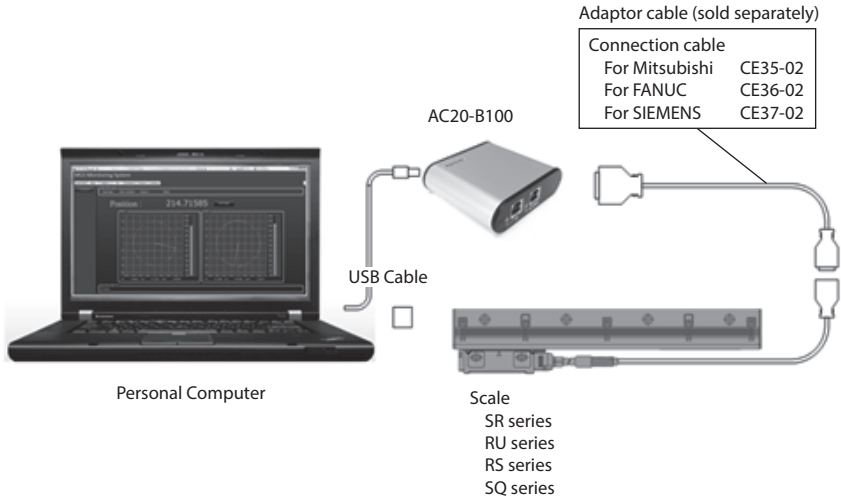
- 3 Confirm the message and click “Yes.”

An uninstallation progress bar appears during uninstallation. When “MGSMonitoringSystem” disappears from within “Programs and Features, uninstallation is complete.

3-5. Scale connection

Connect the AC20-B100 to the scale using the adaptor cable (sold separately).

* The SR77, SR87 and RU77 series require a special cable, so contact our sales representative.



Checks after connection

After all the cables are connected, confirm with the LEDs on the AC20-B100 that there are no problems with the connections.

Confirm in the condition with the computer turned on.

USB connector : Lights in green

ENCODER connector : Lights in green

Reference

LED	Status
Blinks in green	<ul style="list-style-type: none"> Immediately after power is supplied Communication active
Lights in green	<ul style="list-style-type: none"> Power supply normal Communication not active
Blinks in red	<ul style="list-style-type: none"> Error occurred
Lights in red	<ul style="list-style-type: none"> Connector not connected

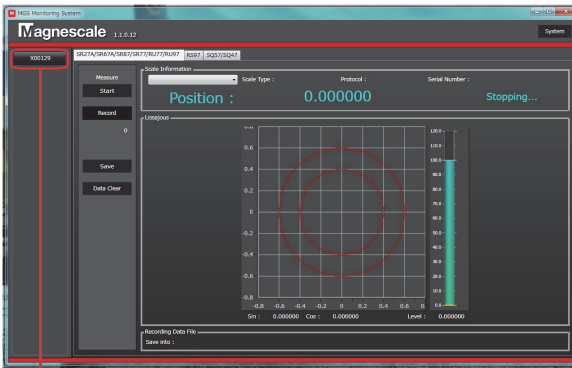
4. Starting up the software and supplying power to the scale

4-1. Starting up the software

- 1 Double-click the MGSMonitoringSystem icon on the computer desktop.



The software starts up.



Connect button

If the AC20-B100 is connected properly to the computer, a button showing the serial number of the connected AC20-B100 appears on the left side of the window. If the AC20-B100 is not connected when the software starts up, the button appears when the AC20-B100 is connected.

This button (Connect button) is used to connect the power to the scale. The serial number text color indicates the power connection status.

White : OFF Light blue : ON

4-2. Ending the software

- 1 Make sure that the power connection to the scale is OFF (the Connect button text is white).
- 2 Click “× (Close)” at the upper-right corner of the window.

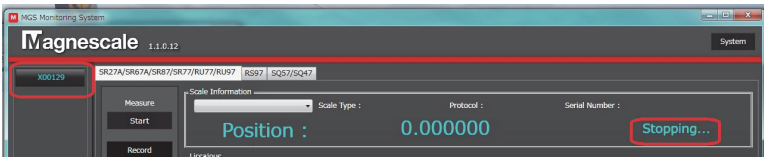
4-3. Supplying power to the scale

- 1 Click the Connect button.
Power is supplied to the connected scale.
The Connect button text changes to light blue.

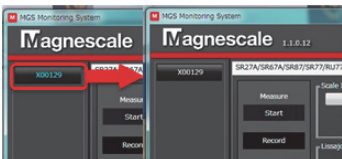


4-4. Stopping the power supply to the scale

- 1 Make sure that the measuring function of the scale is stopped (the status indication is “Stopping...”).

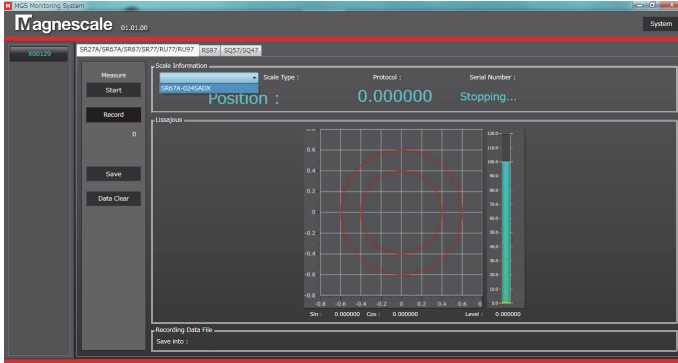


- 2 Click the Connect button.
Power supply to the scale and to the AC20-B100 is stopped.
The Connect button text changes to white.



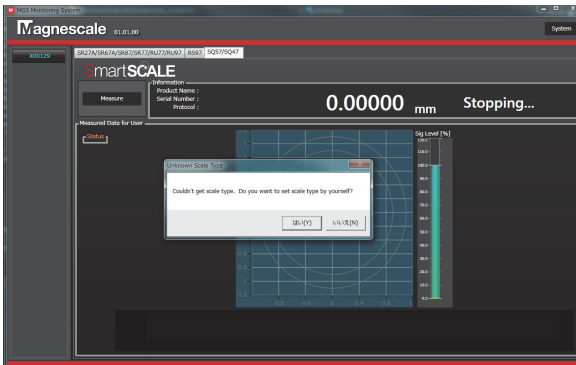
4-5. Scale search

When power is supplied to the scale, the system performs auto search to recognize the scale. Once the scale is recognized, the scale to be connected can be selected from the pull-down menu.



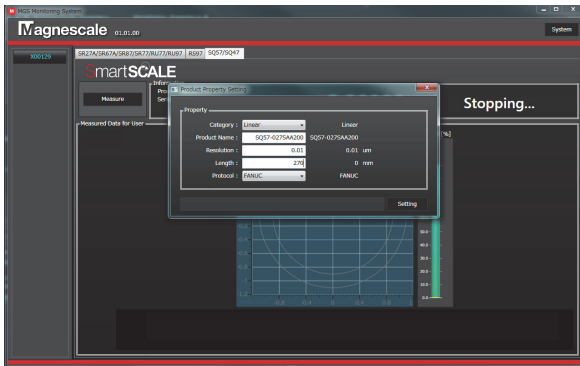
When auto search is not performed, a message appears. In this case, search for the scale to be connected manually.

<Manual scale search>



- 1 Click "Yes (Y)."
A screen for selecting the scale to be connected appears.

- 2 Enter the details (Category, Product Name, Resolution, Length, Protocol) of the scale to be selected, and click the “Setting” button.



(Example above)

Category : Linear

Model name : SQ57-027SAA200

Resolution : 0.01 μm

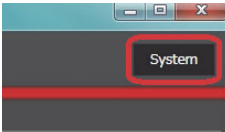
Effective length : 270 mm

Communication protocol : FANUC

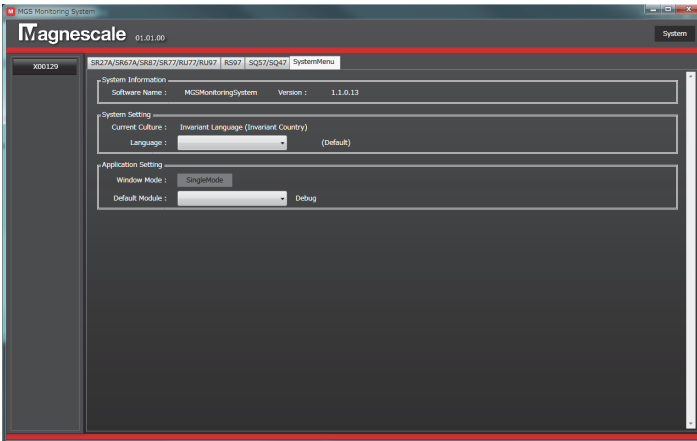
4-6. System settings

Make the software settings, such as the message language and the window display method. The contents set here are automatically saved when the software is ended normally.

- 1 Click the Connect button to stop power supply to the scale (the Connect button text is white).
- 2 Click “System” at the upper-right corner of the software window.



Open the “SystemMenu” tab to display the system settings window.



System Information

This displays the software name and version.

System Setting

Language : Selects the message language. (Japanese / English)

Expert Mode : This function is for software maintenance. It is normally not used.

Application Setting

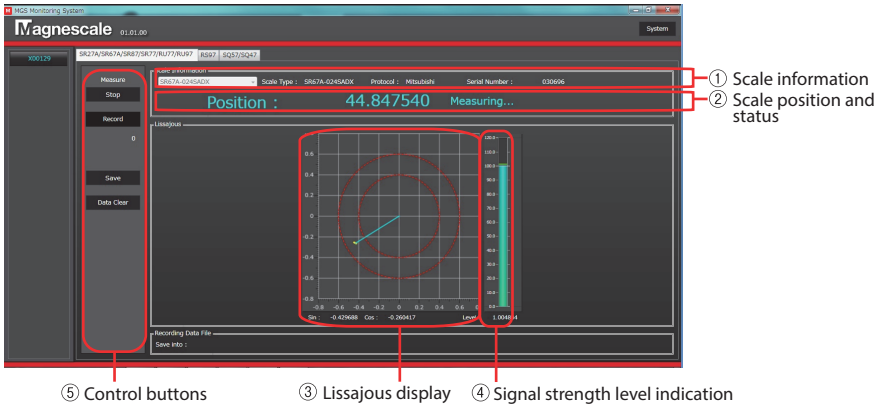
Window Mode : Selects the window display. (tab display / single windows)

Default Module : Selects the functions to be displayed as standard when the software starts up.

5. Monitoring Lissajous signals

5-1. Monitoring the Lissajous signal of SR27A/SR67A/SR87/SR77/RU77/RU97

5-1-1. SR/RU series screen



① Scale information

This displays the information of the connected scale.

② Scale position and status

This displays the position information read by the scale and the scale status. The position is displayed from 0 degrees to 360 degrees for a rotary scale (encoder), or as the absolute position (unit: mm) for a linear scale. The position information is undetermined while monitoring is stopped.

③ Lissajous display

This graph displays the scale sensor signal as a Lissajous figure. When the signal is inside the two red dashed lines, the signal is normal.

④ Signal strength level indication

This graph shows the signal strength of the Lissajous signal. (% display) This corresponds to the light blue line in the Lissajous display.

⑤ Control buttons

These are used to start and stop monitoring.

Control button display details

“Start/Stop” button

This starts and stops monitoring. This button can be used when power is supplied to the scale and a specific scale is selected in “Scale Information.” Always stop monitoring before stopping the power supply to the scale.

“Record” button

Place a check mark in this check box to record the monitored Lissajous data. When this check box contains a check mark, the Lissajous data currently being monitored is accumulated.

“Save” button

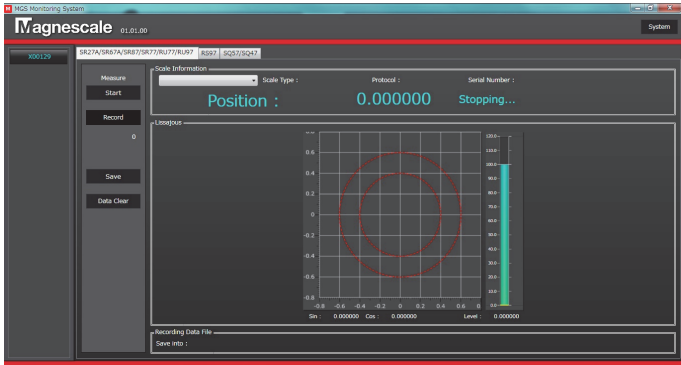
This saves the accumulated Lissajous data in a folder. Always stop monitoring before saving data.

“Data Clear” button

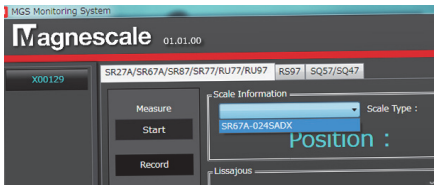
This clears the accumulated data and Lissajous display.

5-1-2. Starting and stopping monitoring

- 1 Click the “SR27A/SR67A/SR87/SR77/RU77/RU97” tab in the condition with the MGSMonitoringSystem software started up.
The window shown below appears.

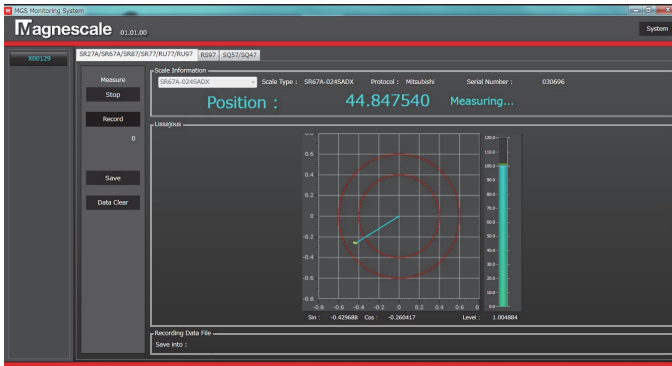


- 2 Make sure that power is supplied to the scale (the Connect button text is light blue).
- 3 Right-click the “Scale Information” combo box and select the scale to be connected.



The scale model name, protocol name, and serial number are displayed in the “Scale Information” field.

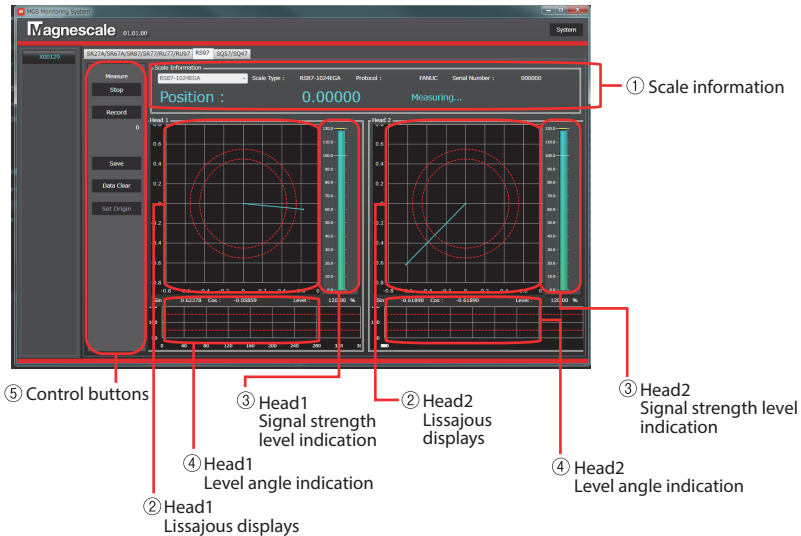
- 4 Click the “Start” button in the “Measure” field.
The status indication changes from “Stopping...” to ”Measuring...”, and monitoring starts.



When the “Stop” button in the “Measure” field is clicked while the status indication is “Measuring...”, monitoring stops and the status indication changes to “Stopping...”

5-2. Monitoring the Lissajous signals of RS97

5-2-1. RS series screen



① Scale information

This displays the information of the connected scale. During monitoring, the position information read by the scale and the scale status are also displayed here. The position information is displayed from 0 degrees to 360 degrees. The position information is undetermined while monitoring is stopped.

② Lissajous displays

These graphs display the scale Head1 and Head2 sensor signals as Lissajous figures. When the signal is inside the two red dashed lines, the signal is normal.

③ Signal strength level indication

This graph shows the signal strength of the Lissajous signal. (% display)
This corresponds to the light blue line in the Lissajous display.

④ Level angle indication

This shows the signal strength level at each angle from 0 degrees to 360 degrees.

⑤ Control buttons

These are used to start and stop monitoring.

Control button display details

“Start/Stop” button

This starts and stops monitoring. This button can be used when power is supplied to the scale and a specific scale is selected in “Scale Information.” Always stop monitoring before stopping the power supply to the scale.

“Record” button

Place a check mark in this check box to record the monitored Lissajous data. When this check box contains a check mark, the Lissajous data currently being monitored is accumulated.

“Save” button

This saves the accumulated Lissajous data in a folder. Always stop monitoring before saving data.

“Clear Data” button

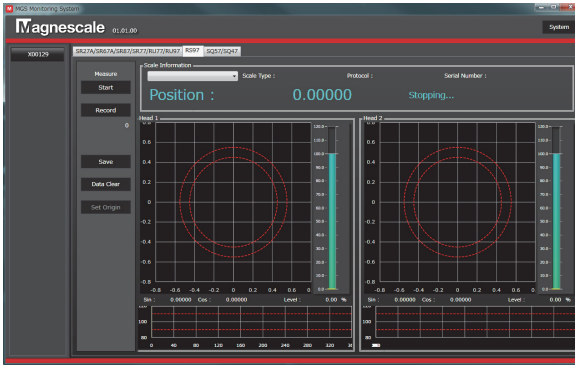
This clears the accumulated data.

“Set Origin” button

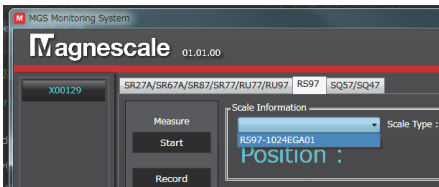
When this is clicked, the position information at that time is set as the reference point. This is a temporary setting, and the reference point position returns to the original position when the software is ended. (This setting does not change the reference point of the scale.)

5-2-2. Starting and stopping monitoring

- 1 Click the “RS97” tab in the condition with the MGSMonitoringSystem software started up.
The window shown below appears.

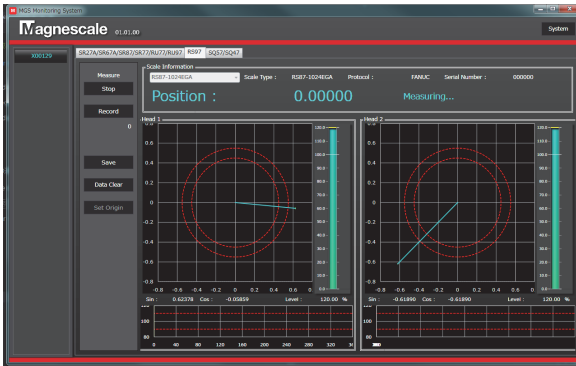


- 2 Make sure that power is supplied to the scale (the Connect button text is light blue).
- 3 Right-click the “Scale Information” combo box and select the scale to be connected.



The scale model name, protocol name, and serial number are displayed in the “Scale Information” field.

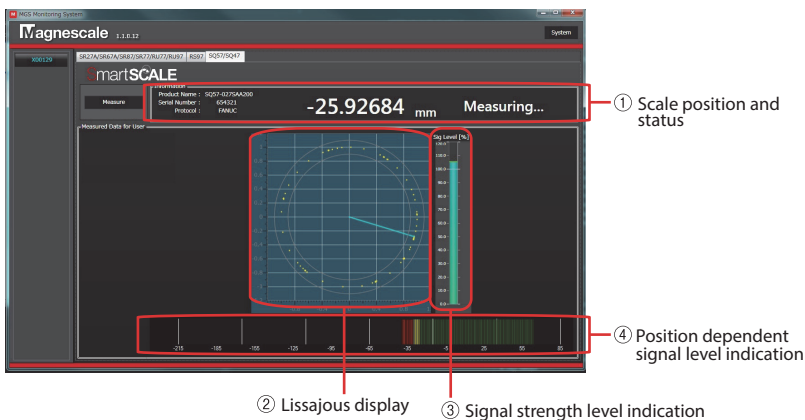
- 4 Click the “Start” button in the “Measure” field.
The status indication changes from “Stopping...” to ”Measuring...”, and monitoring starts.



When the “Stop” button in the “Measure” field is clicked while the status indication is “Measuring...”, monitoring stops and the status indication changes to “Stopping...”

5-3. Monitoring the Lissajous signals of SQ57/SQ47

5-3-1. SQ series screen



① Scale position and status

This displays the position information read by the scale and the scale status. The position is displayed as the absolute position (unit: mm). The position information is undetermined while monitoring is stopped.

② Lissajous display

This graph displays the scale sensor signal as a Lissajous figure. When the signal is inside the two red dashed lines, the signal is normal.

③ Signal strength level indication

This shows the signal strength of the Lissajous signal. (% display) This corresponds to the light blue line in the Lissajous display.

④ Position dependent signal level indication

This displays the scale and sensor signal levels* at the positions passed by the head using different colors. The signal levels are constantly updated. Once drawn, the graph remains even after communication with the AC20-B100 stops, but disappears and a new graph is drawn when scale monitoring is restarted.

* These signal levels differ from the signal strength drawn in the Lissajous display, and change according to the clearance between the scale and the head.

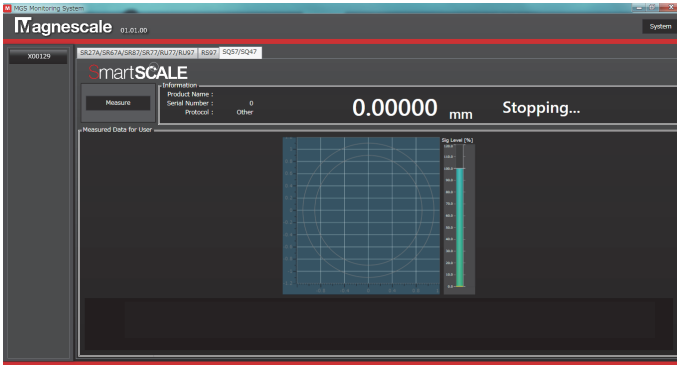
Clearance display: Scale measurement range ± 15 mm



Green : Recommended value (extremely good status)
 Yellow : Inside recommended range (good status)
 Red : Outside recommended range (poor status)
 The color display is intended as a guideline, and does not guarantee functions and/or performance.

5-3-2. Starting and stopping monitoring

- 1 Click the “SQ57/SQ47” tab in the condition with the MGSMonitoringSystem software started up.
The window shown below appears.



- 2 Make sure that power is supplied to the scale (the Connect button text is light blue).
- 3 Click the “Measure” button.
The status indication changes from “Stopping...” to ”Measuring...”, and monitoring starts.



When the “Measure” button is clicked while the status indication is “Measuring...”, monitoring stops and the status indication changes to “Stopping...”

6. Troubleshooting

6-1. Trouble when connecting the power supply

6-1-1. The Connect button is not displayed.

Cause	Action
The AC20-B100 is not connected to the computer.	Check the connection. If the USB LED on the AC20-B100 lights in green, the AC20-B100 is connected properly.
The driver is not installed.	Refer to "3-3. Driver Installation" and install the driver software.
The USB cable is too long.	The USB standard specifies that USB cables should be 5 m or shorter. Replace the USB cable with one that conforms to the standard.
Noise is superposed onto the USB cable.	Keep the USB cable (and the computer) as far as possible from sources of noise. When used in a noisy environment, noise may be superposed onto the USB cable and prevent normal communication.

6-1-2. Power is not supplied to the scale even when the Connect button is clicked.

Cause	Action
The AC20-B100 and the scale are not connected.	<ol style="list-style-type: none">① Check the connection between the AC20-B100 and the adaptor cable. If the Encoder LED on the AC20-B100 lights in green, the adaptor cable is connected properly to the AC20-B100.② Check the connection between the adaptor cable and the scale cable.③ Check the connection between the scale cable and the scale.
Insufficient power supply	When using a scale with high power consumption such as the RS series, bus power supply using only the USB cable from the computer may be insufficient. Connect the AC20-B100 and the computer with a USB cable. (In this case, the computer and the AC20-B100 are connected by two USB cables.)
Power supply was not stopped properly when a different scale was connected.	End the software, disconnect and reconnect the USB connector of the AC20-B100, restart the software, and then perform connection again. If a different scale is connected in the condition with the software started up, the connection and disconnection operation may not be performed properly and normal communication may not be possible.

6-1-3. The message “Couldn't power on scale.” appears when power is supplied.

Cause	Action
Insufficient power supply	When the cable between the scale and the AC20-B100 is long, the power supply may be insufficient due to the cable internal resistance in rare cases. Connect the AC20-B100 and the computer with a USB cable. (In this case, the computer and the AC20-B100 are connected by two USB cables.)
Power supply was not stopped properly when a different scale was connected.	End the software, disconnect and reconnect the USB connector of the AC20-B100, restart the software, and then perform connection again. If a different scale is connected in the condition with the software started up, the connection and disconnection operation may not be performed properly and normal communication may not be possible.
An incompatible scale is connected.	The MGS Monitoring Software can be connected only to specific scales. Refer to “3-1-1. Compatible scales” for the connectable scale products.
The proper cable is not used.	A special scale cable is required only when using the SR77, SR87 or RU77 series. Contact our sales representative.

6-2. Trouble during monitoring

6-2-1. Measurement does not start even when "Start" or "Measure" is clicked.

Cause	Action
Power is not supplied to the AC20-B100.	Select the AC20-B100 to be connected from the device list on the left side of the software window, and supply power. When power is supplied correctly, the Connect button text changes to light blue. After that, measurement can be started when the appropriate scale is selected from the "Scale Information" combo box.
The appropriate scale is not selected.	Select the scale to be connected from the "Scale Information" combo box in the condition with power supplied.
An incompatible scale is selected.	Select the compatible scale tab in the software window.
The scale is not responding properly.	Power may have been supplied again without stopping the power supply correctly during the previous monitoring. Disconnect and reconnect the USB connector of the AC20-B100, restart the software, and click "Start." When monitoring still cannot be performed properly, the scale may not be operating correctly. Contact our Service Department.

6-2-2. Measurement does not stop even when "Stop" or "Measure" is clicked.

Cause	Action
The connection cable with the AC20-B100 has become disconnected.	Click "X" at the upper-right corner of the window to forcibly end the software. Then, restart the software, check the connections with the AC20-B100, and perform the procedure again starting from supplying power.

6-3. Trouble when stopping the power supply

6-3-1. Stopping the power supply fails even when the Connect button is clicked.

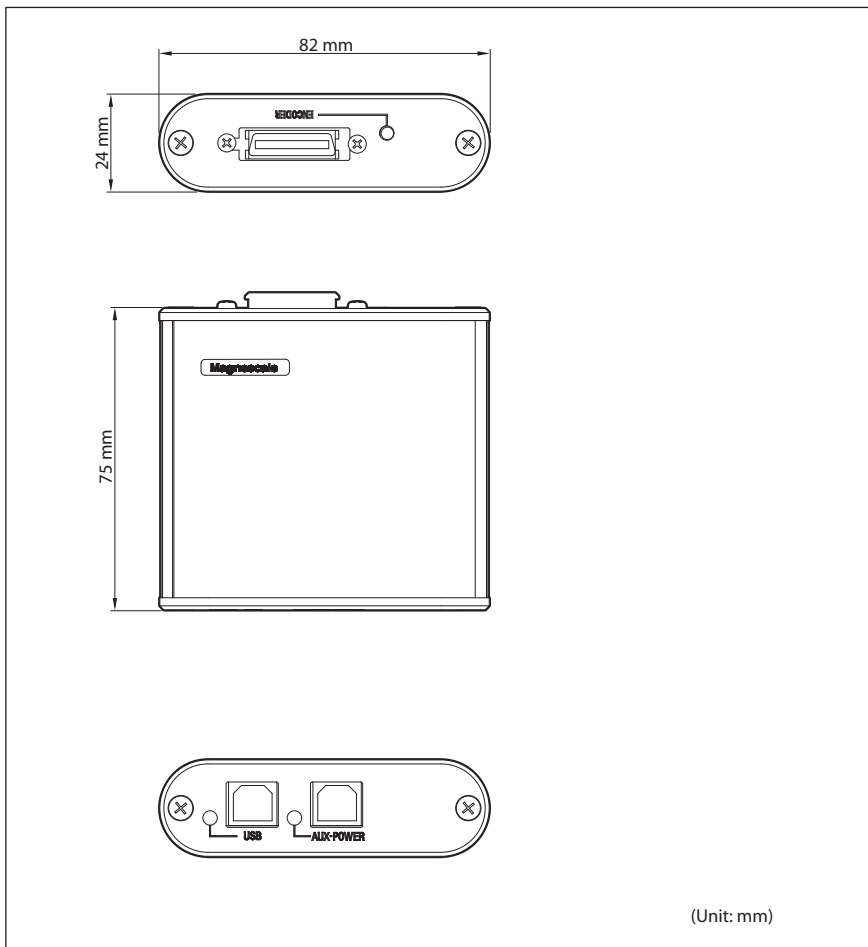
Cause	Action
Measurement is underway.	Click “Stop” or “Measure” to end measurement and check that the status indication is “Stopping...”, then stop the power supply. When the status indication is “Measuring...”, measurement is underway. Power supply can be stopped only in the condition with measurement stopped.

7. Specifications

AC20-B100

Item	Specifications
Connection with the computer	USB 2.0 Full Speed (12 Mbps)
Power consumption	0.4 W max. (AC20-B100 standalone)
Input voltage range	DC 5 V \pm 0.25 V (USB bus power standard)
Operating temperature	0 °C to 40 °C (no condensation)
Storage temperature	-10 °C to 60 °C (no condensation)
Mass	150 g
External dimensions	Refer to “8. Dimensions”

8. Dimensions



このマニュアルに記載されている事柄の著作権は当社にあり、説明内容は機器購入者の使用を目的としています。したがって、当社の許可なしに無断で複写したり、説明内容（操作、保守など）と異なる目的で本マニュアルを使用することを禁止します。

本手册所记载的内容的版权归属 Magnescale Co., Ltd., 仅供购买本手册中所记载设备的购买者使用。

除操作或维护本手册中所记载设备的用途以外，未经 Magnescale Co., Ltd. 的明确书面许可，严禁复制或使使用本手册的任何内容。

The material contained in this manual consists of information that is the property of Magnescale Co., Ltd. and is intended solely for use by the purchasers of the equipment described in this manual. Magnescale Co., Ltd. expressly prohibits the duplication of any portion of this manual or the use thereof for any purpose other than the operation or maintenance of the equipment described in this manual without the express written permission of Magnescale Co., Ltd.

Le matériel contenu dans ce manuel consiste en informations qui sont la propriété de Magnescale Co., Ltd. et sont destinées exclusivement à l'usage des acquéreurs de l'équipement décrit dans ce manuel. Magnescale Co., Ltd. interdit formellement la copie de quelque partie que ce soit de ce manuel ou son emploi pour tout autre but que des opérations ou entretiens de l'équipement à moins d'une permission écrite de Magnescale Co., Ltd.

Die in dieser Anleitung enthaltenen Informationen sind Eigentum von Magnescale Co., Ltd. und sind ausschließlich für den Gebrauch durch den Käufer der in dieser Anleitung beschriebenen Ausrüstung bestimmt. Magnescale Co., Ltd. untersagt ausdrücklich die Vervielfältigung jeglicher Teile dieser Anleitung oder den Gebrauch derselben für irgendeinen anderen Zweck als die Bedienung oder Wartung der in dieser Anleitung beschriebenen Ausrüstung ohne ausdrückliche schriftliche Erlaubnis von Magnescale Co., Ltd.

日本からの輸出時における注意

本製品（および技術）は輸出令別表第1の16の項（外為令別表16の項）に該当します。キャッチオール規制による経済産業省の許可要否につきましては、輸出者様にてご確認ください。

For foreign customers

Note: This product (or technology) may be restricted by the government in your country. Please make sure that end-use, end user and country of destination of this product do not violate your local government regulation.

Magnescale Co., Ltd.

45 Suzukawa, Isehara-shi, Kanagawa 259-1146, Japan