

Magnescale

Parameter Transfer Tool for MG80-EI / MG80-PN / MG80-EC

Read all the instructions in the manual carefully before use and strictly follow them.
Keep the manual for future references.

Instruction Manual

Trademarks

Microsoft Windows is a registered trademark of Microsoft Corporation.

Other system names, product and service names described in the instruction manual are trademarks or registered trademarks of their corresponding manufacturers.

IN NO EVENT WILL MAGNESCALE CO., LTD. OR ITS SUPPLIERS BE LIABLE FOR ANY CONSEQUENTIAL OR INCONSEQUENTIAL DAMAGES, INCLUDING BUT NOT LIMITED TO, LOST PROFITS, LOST SAVINGS, OR ANY THIRD PARTY CLAIMS ARISING OUT OF USE OF THE SOFTWARE DESCRIBED IN THIS MANUAL.

The specifications of this software may be changed without prior notice.

This software has been confirmed to operate properly on Microsoft Windows 10 / Microsoft Windows 11.

Its operation is not guaranteed on future updates of Microsoft Windows 10 / Microsoft Windows 11.

1 . Introduction

The Parameter Transfer Tool is software that allows you to create a backup file of the parameters stored inside the Magnescale communication module MG80-EI/PN/EC and write the parameters in the backup file to another MG80-EI/PN/EC.

Software name: MG80-EI_PN_EC_ParameterTransferTool.exe

Supported models: MG80-EI/PN/EC only

Note: Cannot be used for MG80-MA1/MA2/NE/SC1/SC2.

What to prepare

Windows 10/11 PC with LAN port

LAN cable

When replacing an MG80 that is already installed and used in a facility, etc., read the parameters of the MG80 in use before replacing it with the new MG80 and writing the parameters of the original MG80.

After installing this software on a Windows PC, perform the replacement work in the following order.

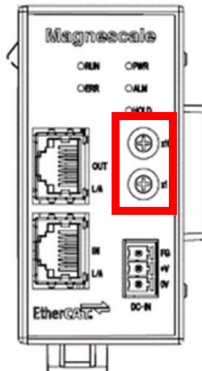
[Note]

- When replacing with a new MG80, use serial number 500000 or later.
- In the MG80-PN replacement process, the parameters of the MG80-PN in use must be written to the new MG80-PN using this software, and then the PLC must be set.
- Please refer to the instruction manual for the PLC setting.
- For Siemens PLC, the IP address and PROFINET device name for the new MG80-PN must be set.

2. Parameter read procedure

- (1) Write down the value of the rotary SW of the MG80 being used.

*Return to the original value after the work is completed.



- (2) With the MG80 power off, set the MG80 rotary SW to 0x00.

The IP address of the MG80 becomes 192.168.100.1.

- (3) Set the IP address of the PC.

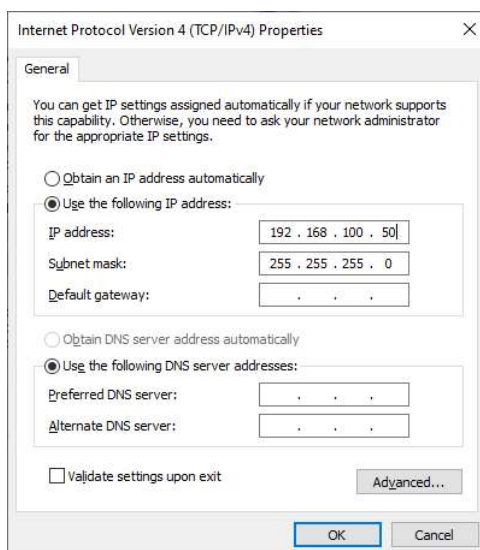
*Please make a note of the settings values in advance so that you can return to the state before the change.

IP address : 192.168.100.xxx (xxx : other than 1)

Subnet mask : 255.255.255.0

Control Panel→Network and Sharing Center→Change adapter settings

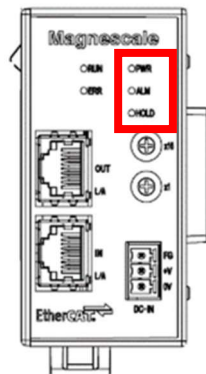
→Right Click Network Connection→Properties→Internet Protocol Version 4(TCP/IPv4)→Propertie



(4) Connect the PC and MG80 directly with an Ethernet cable.



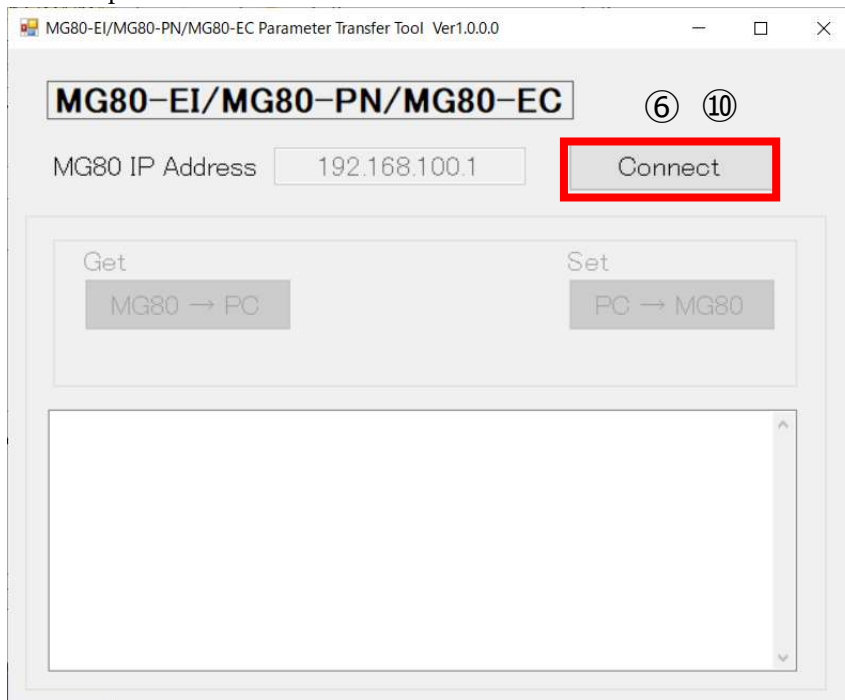
(5) Turn on the power of MG80



The three LEDs in the red frame above will flash.

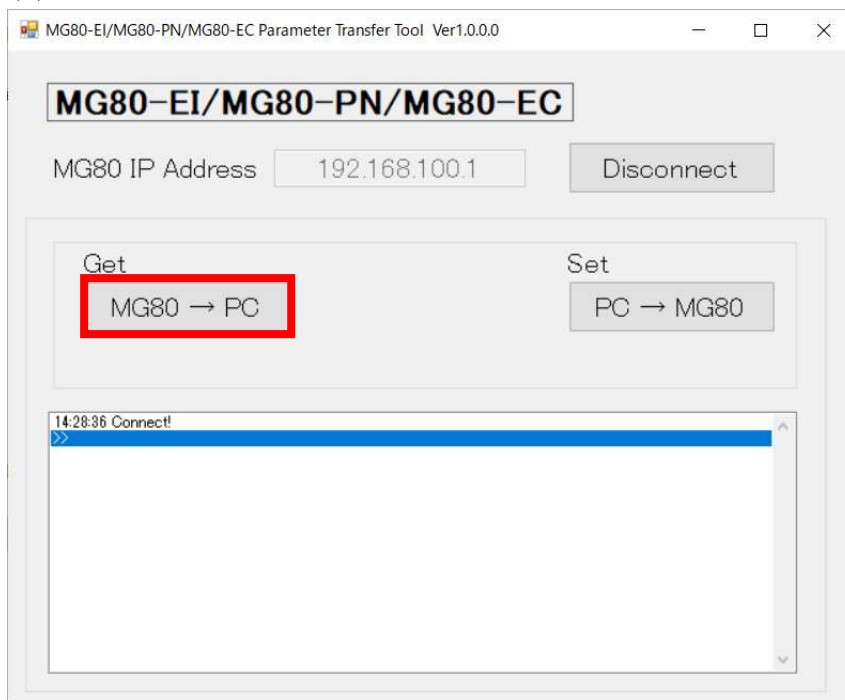
If they do not flash, please double-check that the MG80 rotary switch is set to 0x00.

- (6) Start the parameter transfer tool "MG80-EI_PN_EC_ParameterTransferTool.exe" and press the Connect button.



*If the connection fails, turn off the MG80 and start over from the startup of this tool.

- (7) Press the "Get MG80 → PC" button.



(8) When the parameter reading is completed, give a name and save the parameter.

(9) Confirm that Success is displayed.



(10) After disconnecting from MG80 by pressing the Disconnect button, exit the parameter transfer tool by pressing the X button.

(11) Turn off the MG80 and return the rotary SW to the value you wrote down in step (1).

(12) Return the MG80 Ethernet cable to its original position.

(13) Restore the IP address settings of the PC.

3. Parameter writing procedure

(1) With the MG80 power off, set the MG80 rotary SW to 0x00.

The IP address of the MG80 becomes 192.168.100.1.

(2) Set the IP address of the PC.

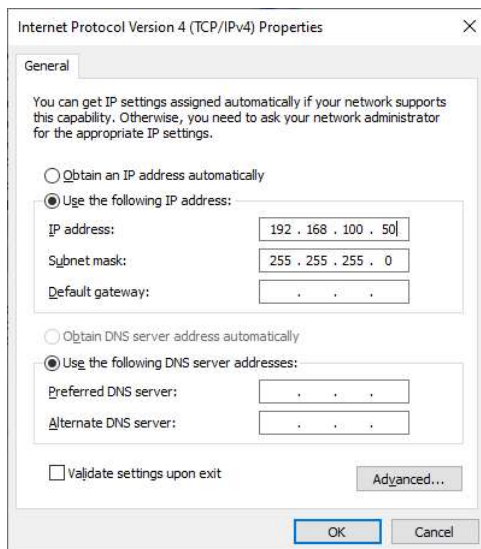
IP address : 192.168.100.xxx (xxx : other than 1)

Subnet mask : 255.255.255.0

*Please make a note of the settings values in advance so that you can return to the state before the change.

Control Panel→Network and Sharing Center→Change adapter settings

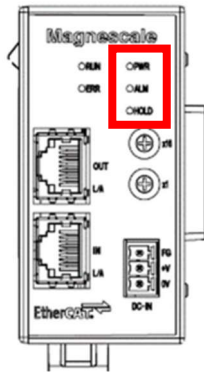
→Right Click Network Connection→Properties→Internet Protocol Version 4(TCP/IPv4)→Properties



(3) Connect the PC and MG80 directly with an Ethernet cable.



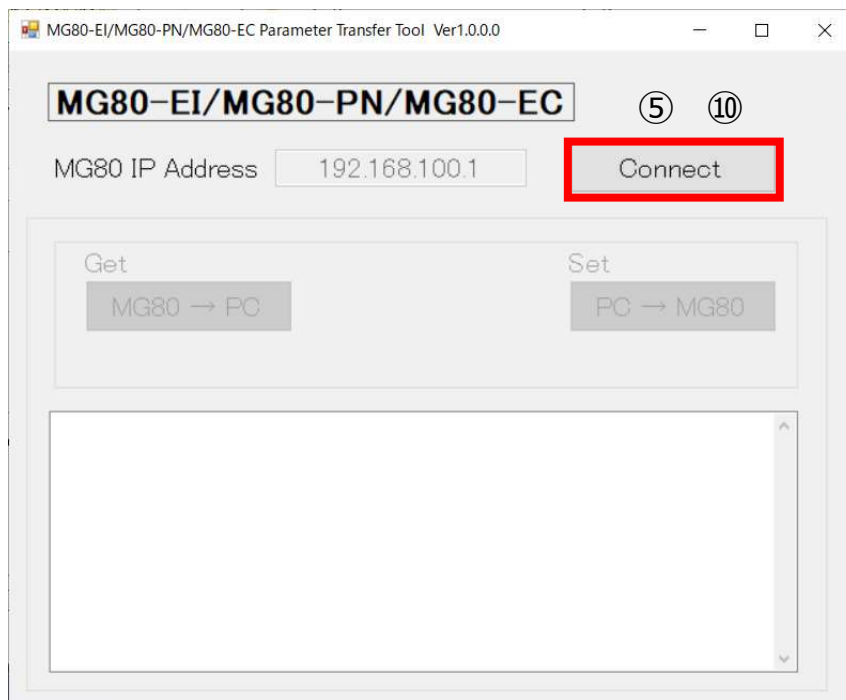
(4) Turn on the MG80 power supply



The three LEDs in the red frame above will flash.

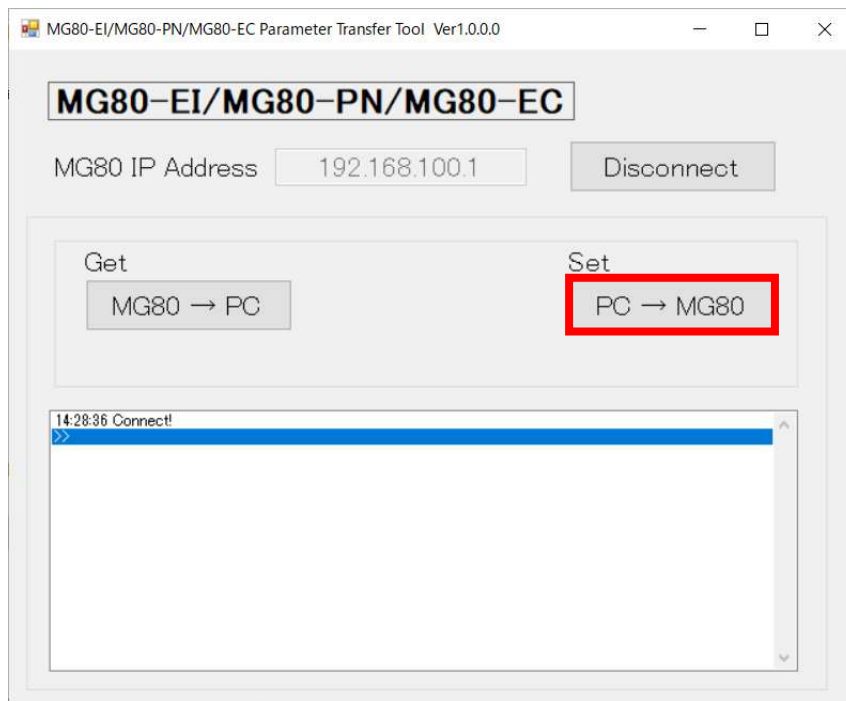
If they do not flash, please double-check that the MG80 rotary switch is set to 0x00.

(5) Start the parameter transfer tool "MG80-EI_PN_EC_ParameterTransferTool.exe" and press the Connect button.



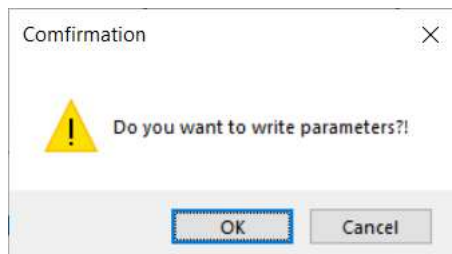
*If the connection fails, turn off the MG80 and start over from the startup of this tool.

(6) Press the “Set PC → MG80” button.



(7) Open the folder where the parameter file is saved and select the parameter file to be used for writing.

(8) Press OK button on the confirmation message to write the parameters.



(9) Confirm that the message "Success" is displayed.



(10) Press the Disconnect button to disconnect from MG80, and then press the X button to exit the parameter transfer tool.

(11) Turn off the MG80 and set the rotary SW to the IP address that will be used. For MG80 replacement work, set the value to that of the parameter readout procedure (1).

(12) Return the Ethernet cable connection of the MG80 to its original position.

(13) Restore the IP address settings of the PC.

このマニュアルに記載されている事柄の著作権は当社にあり、説明内容は機器購入者の使用を目的としています。したがって、当社の許可なしに無断で複写したり、説明内容（操作、保守など）と異なる目的で本マニュアルを使用することを禁止します。

The material contained in this manual consists of information that is the property of Magnescale Co., Ltd. and is intended solely for use by the purchasers of the equipment described in this manual. Magnescale Co., Ltd. expressly prohibits the duplication of any portion of this manual or the use thereof for any purpose other than the operation or maintenance of the equipment described in this manual without the express written permission of Magnescale Co., Ltd.

Le matériel contenu dans ce manuel consiste en informations qui sont la propriété de Magnescale Co., Ltd. et sont destinées exclusivement à l'usage des acquéreurs de l'équipement décrit dans ce manuel.

Magnescale Co., Ltd. interdit formellement la copie de quelque partie que ce soit de ce manuel ou son emploi pour tout autre but que des opérations ou entretiens de l'équipement à moins d'une permission écrite de Magnescale Co., Ltd.

Die in dieser Anleitung enthaltenen Informationen sind Eigentum von Magnescale Co., Ltd. und sind ausschließlich für den Gebrauch durch den Käufer der in dieser Anleitung beschriebenen Ausrüstung bestimmt.

Magnescale Co., Ltd. untersagt ausdrücklich die Vervielfältigung jeglicher Teile dieser Anleitung oder den Gebrauch derselben für irgendeinen anderen Zweck als die Bedienung oder Wartung der in dieser Anleitung beschriebenen Ausrüstung ohne ausdrückliche schriftliche Erlaubnis von Magnescale Co., Ltd.

日本からの輸出時における注意

本製品（および技術）は輸出令別表第1の16の項（外為令別表16の項）に該当します。キャッチオール規制による経済産業省の許可要否につきましては、輸出者様にてご確認ください。

For foreign customers

Note: This product (or technology) may be restricted by the government in your country. Please make sure that end-use, end user and country of destination of this product do not violate your local government regulation.

Magnescale Co., Ltd.

45 Suzukawa, Isehara-shi, Kanagawa 259-1146, Japan

Parameter Transfer Tool
for MG80-El / MG80-PN / MG80-EC
2-A03-708-1B

2024.7
Printed in Japan
©2024 Magnescale Co., Ltd.