

Magnescale

Keyboard App.

μMATE Link

Read all the instructions in the manual carefully before use and strictly follow them.
Be sure to keep this manual for future reference.

This instruction manual corresponds to Ver. 1.1 of the application software.
For operating requirements, such as supported OS versions, and recommended specifications,
refer to the listing on the App Store.

Instruction Manual

Trademarks

- Apple is a trademark of Apple Inc., registered in the U.S. and other countries and regions.
- iOS is the name of an operating system developed by Apple Inc.
IOS is a trademark or registered trademark of Cisco in the U.S. and other countries and regions and is used under license.
- The iPhone trademark is used under license from AIPHONE CO., LTD.
- iPad is a trademark of Apple Inc., registered in the U.S. and other countries and regions.
- App Store is a service mark of Apple Inc.
- Other system names, product names, and service names described in this instruction manual are trademarks or registered trademarks of their corresponding manufacturers. Note that marks such as ™, ©, and ® are not used in the body text of this document.

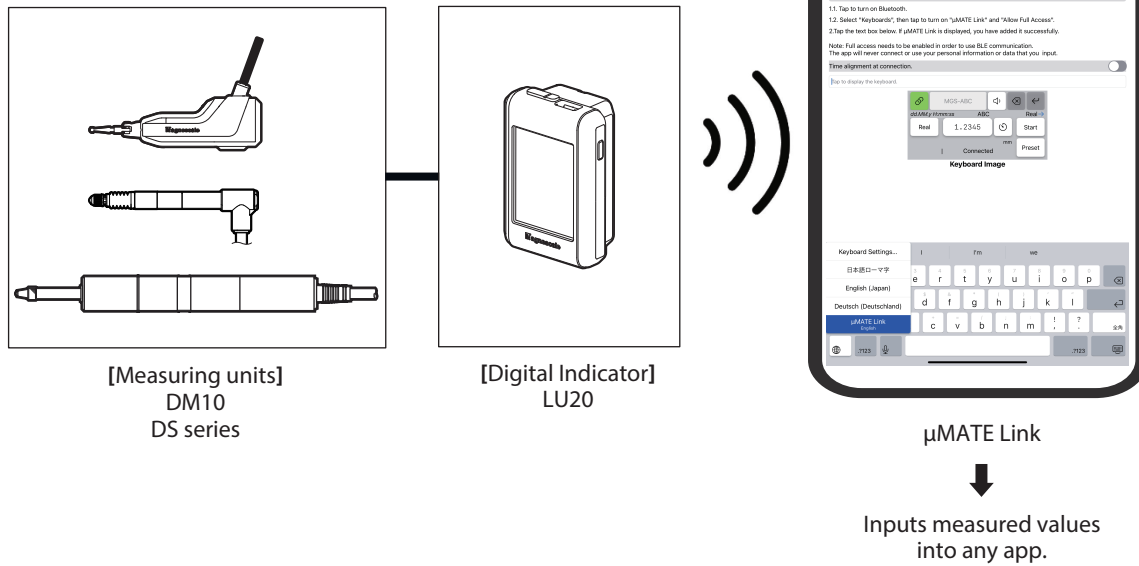
[Note]

There may be some instances of restricted functionality or display differences regarding the text and display screens appearing in this instruction manual due to the version of iOS used.

- | |
|---|
| <ul style="list-style-type: none">• In no event will Magnescale Co., Ltd. or its suppliers be liable to you for any consequential or inconsequential damages, including any lost profits or lost savings or any claims made by a third party arising out of use of the software described in this manual.• The specifications of the software may be changed without prior notice. |
|---|

1. System configuration

μ MATE Link is a custom iOS software app that enables connection via Bluetooth to the LU20. It allows display of measured values in an input keyboard on an iPhone or iPad and input of data to any app simply by tapping an input key. This makes it easy to record measured values in apps such as Notes and Mail.



2. Installation

2-1. μMATE Link installation

Install “μMATE Link” from the App Store.

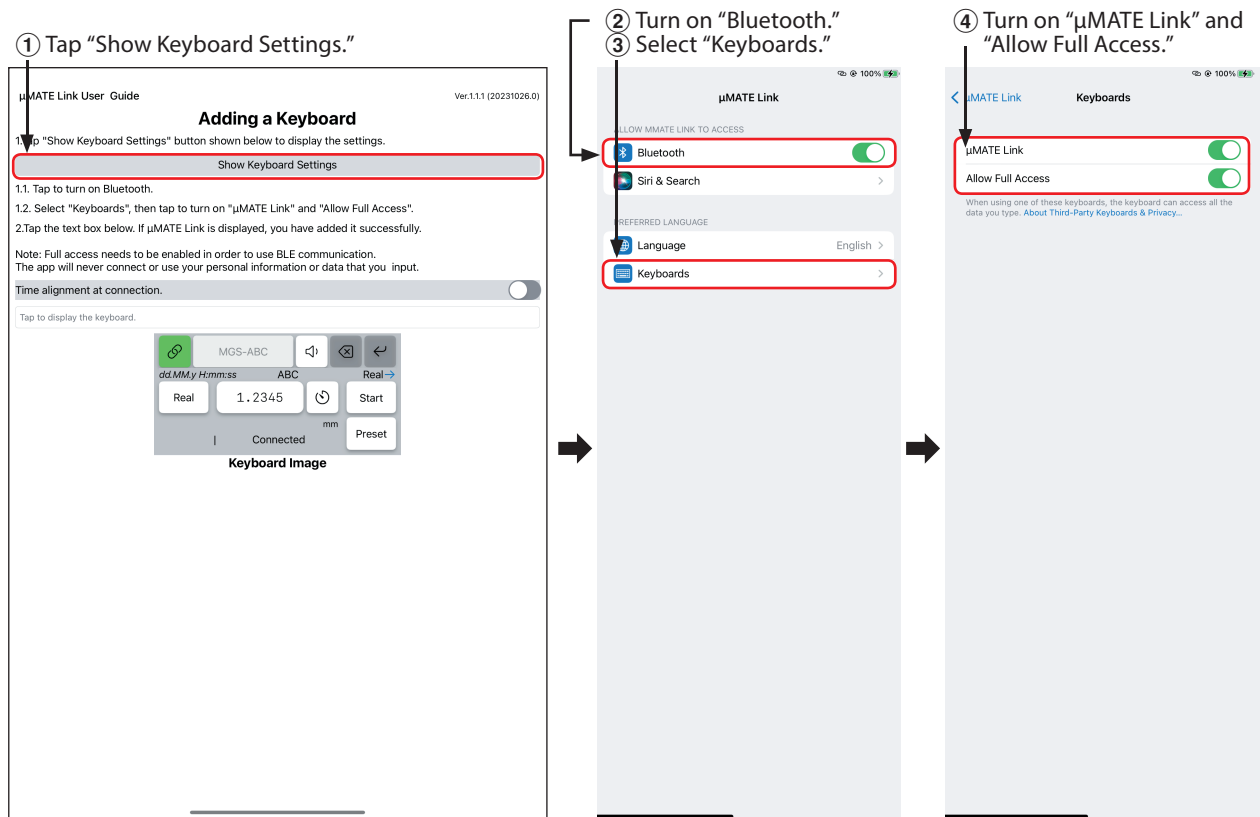
2-2. Keyboard settings

- 1 Tap the “μMATE Link” icon created when the app was installed.



μMATE Link opens.

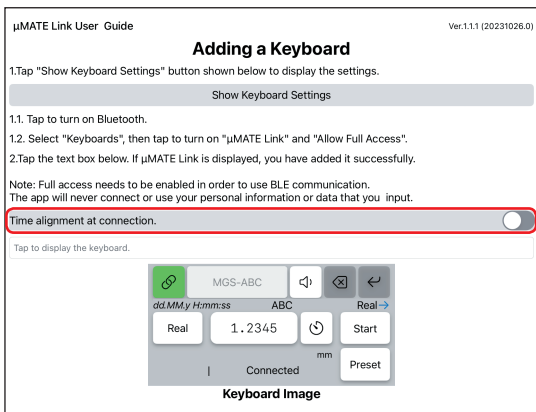
- 2 Tap “Show Keyboard Settings” to configure the Bluetooth and Keyboards settings.



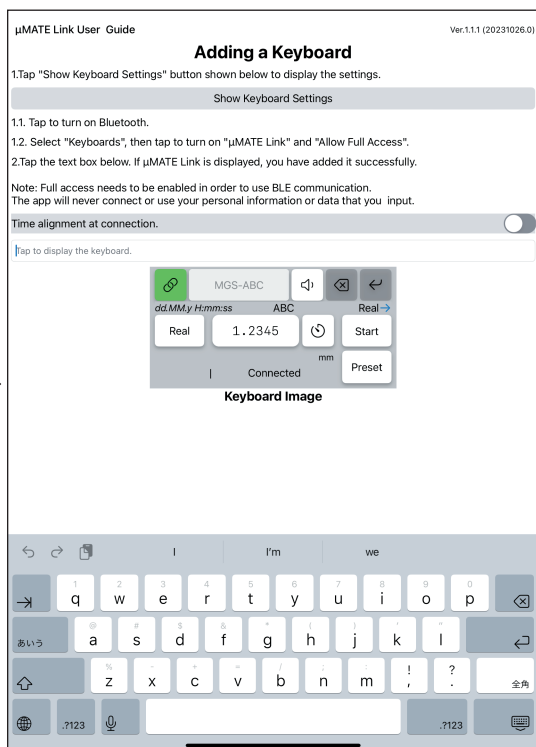
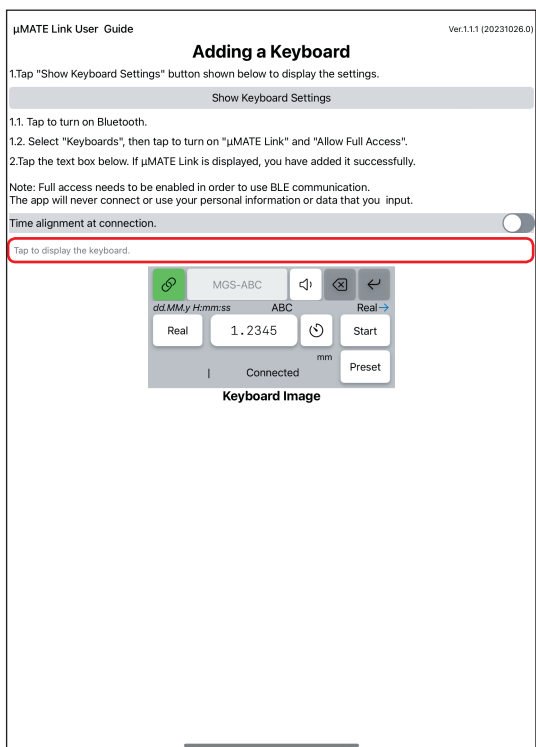
3. Selecting the μMATE Link keyboard

3-1. Showing the μMATE Link keyboard

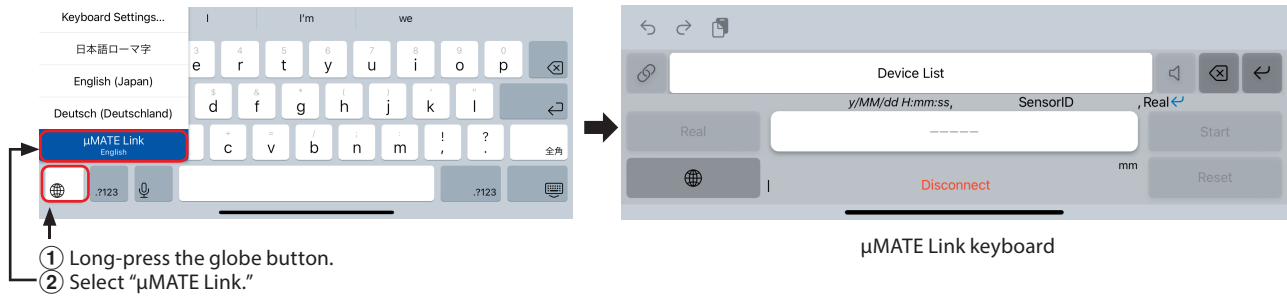
- 1 Tap the “μMATE Link” icon created when the app was installed.
μMATE Link opens.
- 2 To set the current time of the iPhone or iPad in the LU20, turn on “Time alignment at connection”.
When the μMATE Link is connected to the LU20, the date and time is automatically set in the LU20.



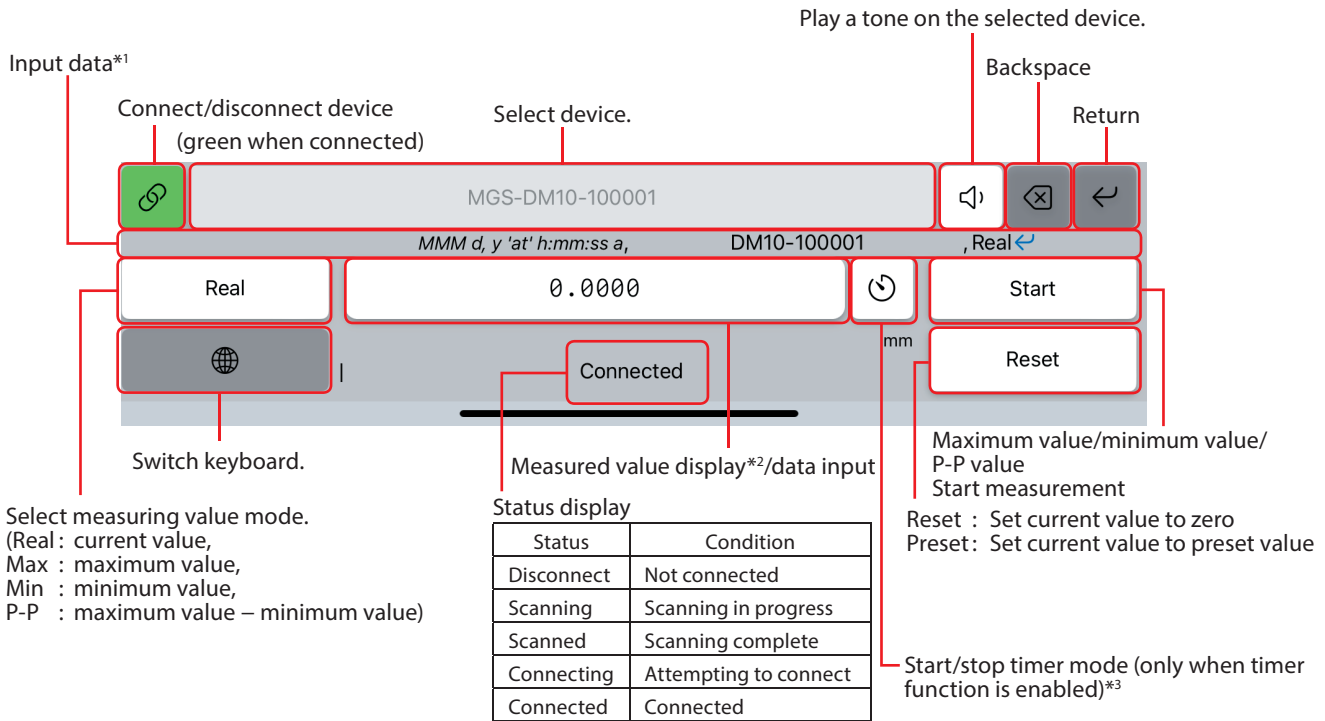
- 3 Tap “Tap to display the keyboard.”
The keyboard appears.



- 4 Long-press the globe button on the keyboard and select “μMATE Link.”
The μMATE Link keyboard appears.



3-2. μMATE Link keyboard functions



*1. Reflects the HID format setting of the LU20.
<Reference> HID Format of the LU20: Settings (☰) → Data Save → HID Format

*2. Reflects the decimal separator (DecPoint) set by the HID Format of the LU20.

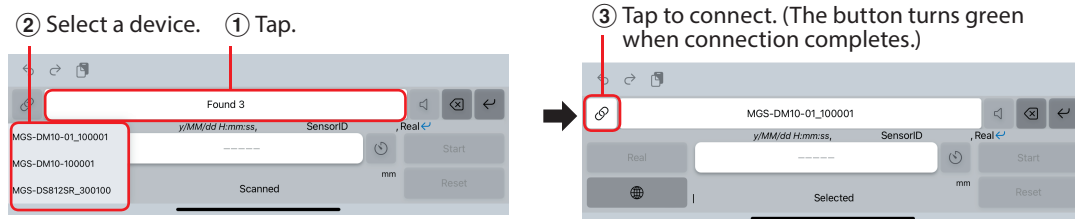
*3. The timer function can be enabled or disabled on the LU20.
<Reference> Timer ON/OFF of the LU20: Settings (☰) → Data Save → Mode → Timer

Note : For details of setting items *1 to *3, refer to the LU20 Operating Manual.

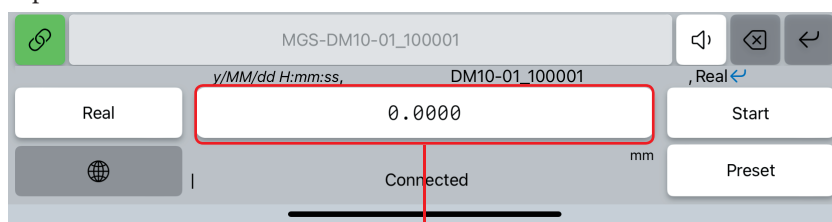
4. Inputting a measured value

Follow the steps below to connect any device (LU20) to μ MATE Link, display a measured value, and input the measured value into an app (such as Notes or Mail) on an iPhone or iPad.

- 1 On the iPhone or iPad, open the app (such as Notes or Mail) into which a measured value will be input.
- 2 Display the μ MATE Link keyboard (see section 3-1).
- 3 Select the device to connect to, then connect.



- 4 In the iPhone or iPad app, move the cursor to the location where the measured value will be input.
- 5 Input the measured value.



5. Troubleshooting μ MATE Link

If there are problems using μ MATE Link, try checking the following and taking the suggested actions.

If the problem is not resolved contact us.

The target device for connection is not displayed.



- Is Bluetooth enabled on the device?
- Are there obstacles between the device and the iPhone or iPad?
- Is the device too far away from the iPhone or iPad?
- Is another device already connected via Bluetooth?

Buttons don't work.



- Is the device connected?
Some buttons will not function when no device is selected or if no communication link has been established.

Cannot connect to device.



- Are there obstacles between the device and the iPhone or iPad?
- Is the device too far away from the iPhone or iPad?
- Try disconnecting from the device and then reconnecting.

Cannot update measured value.



- Check the measuring value mode.
- The communication link may be unstable. Try disconnecting from the device and then reconnecting.
- Is the LU20 on hold?

<Other>

Operation is unstable.

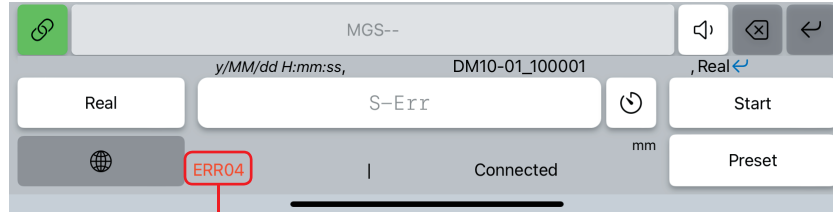


Operation can become unstable if the user switch apps while connected to a device. If operation does not stabilize, try reconnecting. If this does not resolve the problem, try restarting the iPhone or iPad.

6. Error messages

When an error occurs, it is not possible to input the measured value.

Check the error message that is displayed. It may be possible to resolve the problem by taking the corresponding action listed below.



Error message display

Error message	Status	Action
Bluetooth Off	Bluetooth is disabled on the iPhone or iPad.	Turn on Bluetooth on the iPhone or iPad, and in μ MATE Link.
ERR [x]*	Measuring unit or LU20 error	Restart the LU20 and reconnect.
ERR BLE [x]*	Bluetooth-related error	Reconnect.
ERR BLE Connection failed	Bluetooth: Connection failed.	
ERR BLE Full access	Bluetooth: Too many connected devices.	
ERR BLE Not support	Bluetooth: Connection to unsupported device.	
ERR BLE Timeout	Bluetooth: Timeout	
ERR BLE Unknown	Bluetooth: Unknown error	
ERR BLE Unknown device	Bluetooth: Unknown device	
ERR Disconnected	Not connected.	
ERR Format	Receive data error.	
ERR Timeout	Receive timeout (automatic disconnection)	
Full Access Off	Full access is disabled for μ MATE Link.	Enable full access for μ MATE Link. (See "2-2. Keyboard settings.")
No sensor	Measuring unit not connected.	Connect a measuring unit to the LU20.

* [x] represents a numeral.

このマニュアルに記載されている事柄の著作権は当社にあり、説明内容は機器購入者の使用を目的としています。したがって、当社の許可なしに無断で複製したり、説明内容（操作、保守など）と異なる目的で本マニュアルを使用することを禁止します。

本手册所记载的内容的版权归属Magnescale Co., Ltd.，仅供购买本手册中所记载设备的购买者使用。

除操作或维护本手册中所记载设备的用途以外，未经 Magnescale Co., Ltd. 的明确书面许可，严禁复制或使
用本手册的任何内容。

The material contained in this manual consists of information that is the property of Magnescale Co., Ltd. and is intended solely for use by the purchasers of the equipment described in this manual.

Magnescale Co., Ltd. expressly prohibits the duplication of any portion of this manual or the use thereof for any purpose other than the operation or maintenance of the equipment described in this manual without the express written permission of Magnescale Co., Ltd.

Le matériel contenu dans ce manuel consiste en informations qui sont la propriété de Magnescale Co., Ltd. et sont destinées exclusivement à l'usage des acquéreurs de l'équipement décrit dans ce manuel.

Magnescale Co., Ltd. interdit formellement la copie de quelque partie que ce soit de ce manuel ou son emploi pour tout autre but que des opérations ou entretiens de l'équipement à moins d'une permission écrite de Magnescale Co., Ltd.

Die in dieser Anleitung enthaltenen Informationen sind Eigentum von Magnescale Co., Ltd. und sind ausschließlich für den Gebrauch durch den Käufer der in dieser Anleitung beschriebenen Ausrüstung bestimmt.

Magnescale Co., Ltd. untersagt ausdrücklich die Vervielfältigung jeglicher Teile dieser Anleitung oder den Gebrauch derselben für irgendeinen anderen Zweck als die Bedienung oder Wartung der in dieser Anleitung beschriebenen Ausrüstung ohne ausdrückliche schriftliche Erlaubnis von Magnescale Co., Ltd.

日本から輸出時における注意

本製品(および技術)は輸出令別表第1の16の項(外為令別表16の項)に該当します。キャッチオール規制による経済産業省の許可要否につきましては、輸出者様にてご確認ください。

For foreign customers

Note: This product (or technology) may be restricted by the government in your country. Please make sure that end-use, end user and country of destination of this product do not violate your local government regulation.

Magnescale Co., Ltd.

45 Suzukawa, Isehara-shi, Kanagawa 259-1146, Japan